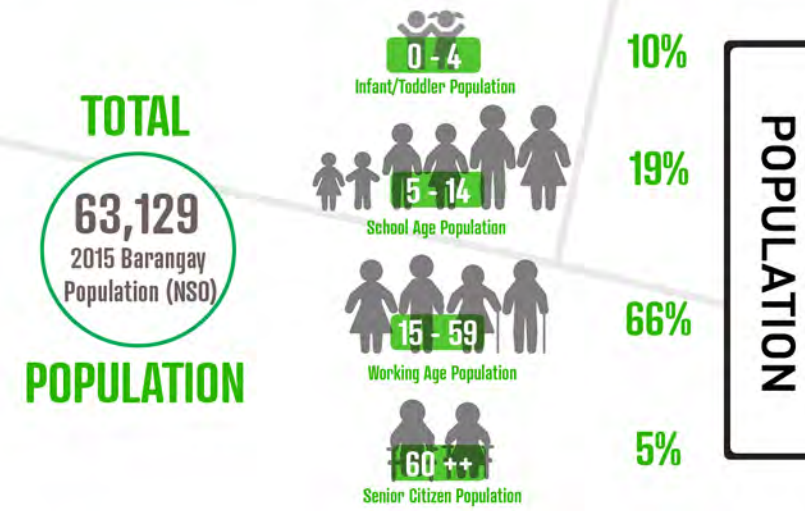


# BARANGAY PROFILE

## BARANGAY TATALON, QUEZON CITY



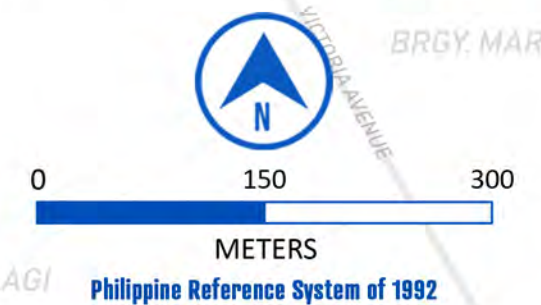
### LEGEND

#### CRITICAL FACILITIES

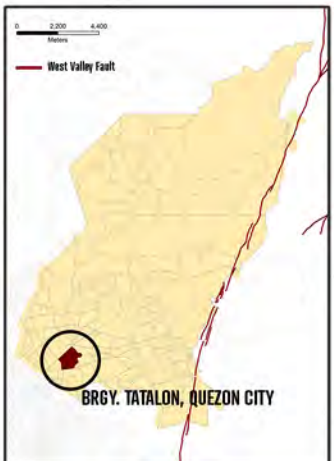
- Barangay Hall
- Basketball Court
- Bridge
- Day Care Center
- Fire Station
- Health Center
- Market
- Place of Worship
- Police Station
- School
- Barangay Boundary
- Building (houses, establishments)
- Waterways (San Juan River)
- Road Network

#### AREA / PUROK

- Areas with perceived high child population  
\*based on stakeholder inputs from the Focus Group Discussion (August 1, 2018)



**Sources of Data**  
**Base Data:**  
 - Administrative Boundaries came from Greater Metro Manila Area Risk Analysis Project (2013), validated and enhanced by EMI through the Focus Group Discussion (2018)  
 - Sub barangay delineation were based from the output of the Focus Group Discussion (2018)  
 - Road Network and water ways data came from OpenStreetmaps, enhanced by EMI through the Focus Group Discussion (2018)  
**Building Footprints and Points of Interests:**  
 - EMI, OpenStreetMaps, and the Quezon City Local Government  
 - Building heights derived from the DEMs from NAMRIA  
 - Focus Group Discussion held on August 1, 2018 at the Senior Citizen's Building in Brgy. Tatalon, Q.C.



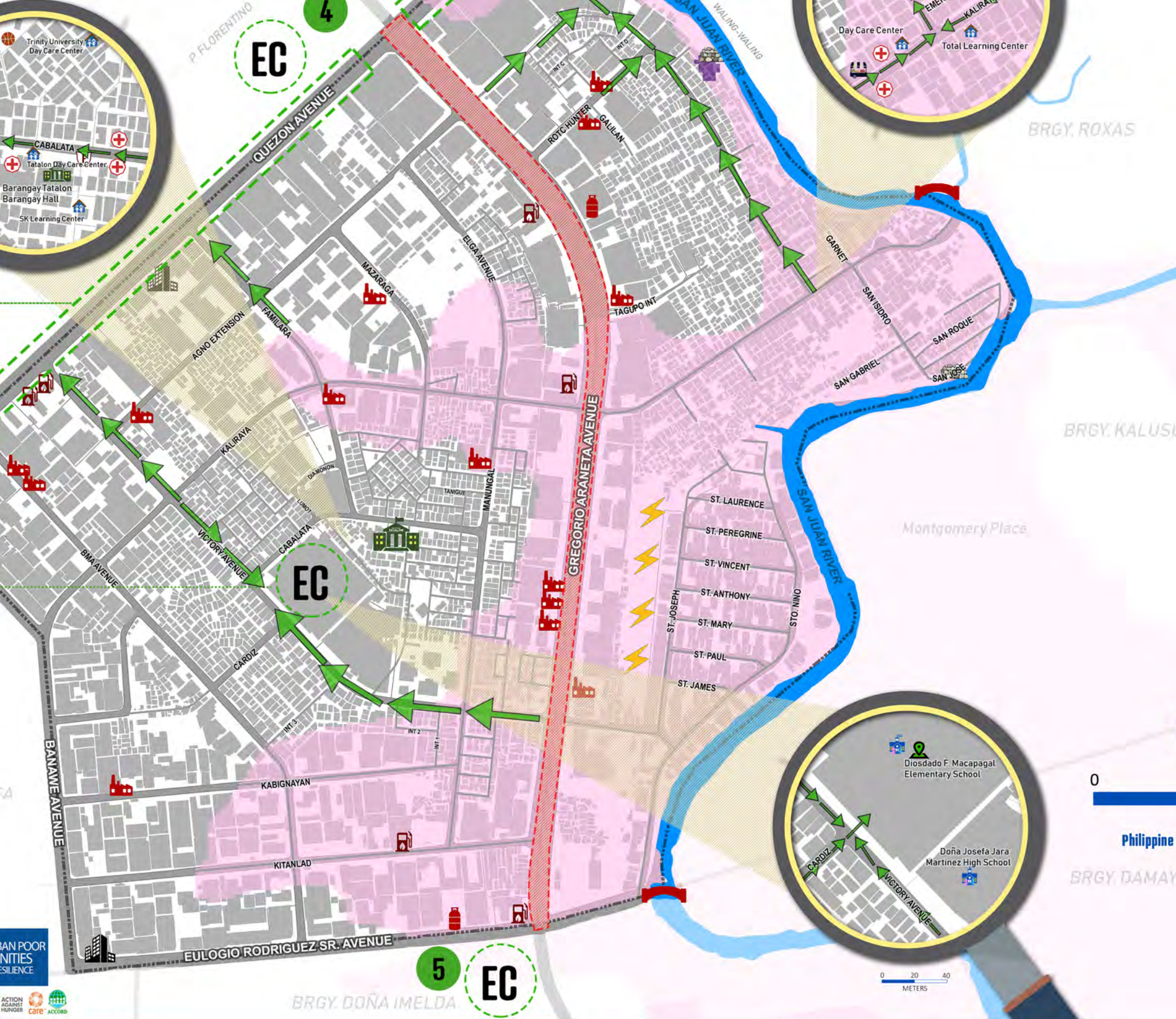
# EARTHQUAKE IMPACT

## BARANGAY TATALON, QUEZON CITY



Batay sa ginawang pag-aaral at pagsusuri ng PHIVOLCS ukol sa "earthquake risk" kasama ng NDRRMC - CSCAND - GA sa Greater Metro Manila Area - Risk Analysis Project (2013).

BRGY. STO. DOMINGO



**LIQUEFACTION POTENTIAL**  
 0.1% of the barangay has moderate liquefaction potential  
 44% of the barangay has low liquefaction potential

**GROUND SHAKING**

**VERY DESTRUCTIVE**

**INTENSITY VIII**

- Road and building damage
- Landslides and debris fall
- Violent Shaking
- Difficulty to stand up
- Tilted utility posts, towers

\*based on the Philippine Earthquake Intensity Scale of PHIVOLCS  
 Ito ang tinatayang lakas ng pagyanig (intensity) sa kabuuan ng Brgy. Tatalon batay sa M7.2 earthquake scenario para sa West Valley Fault.

**PROBABLE SECONDARY HAZARDS**  
 Hazardous facilities, including gas stations, warehouses, factories, high voltage transmission lines and high-rise buildings, which may cause explosions, fire and debris fall.

- Bridge
- Gas Station
- Hazardous Facilities (warehouse, factories)
- High Rise Buildings
- High Voltage Transmission Lines
- NLEX - SLEX Connector Road (Skyway)
- Riprap (Damaged)
- LPG Dealers

### LEGEND

- Barangay Boundary
- Road Network
- Building (houses, establishments)
- Waterways (San Juan River)

### EVACUATION CENTER (EC)

1. People's Park
2. Diosdado F. Macapagal Elementary School
3. Quezon Avenue
4. Sto. Domingo Church Parking Lot\*
5. Puregold QI Parking Lot\*  
 \*outside the barangay

**EVACUATION ROUTE**  
 The identified earthquake evacuation centers and routes illustrated are part of the results of the focus group discussion.



# FLOOD IMPACT



## BARANGAY TATALON, QUEZON CITY

Batay sa 100-year flood hazard map (worst-case scenario) galing sa Project NOAH na napahusay at nabigyang patunay ng EMI sa pamamagitan ng participatory mapping process sa Barangay Tatalon noong Agosto 1, 2018.

## EVACUATION CENTERS

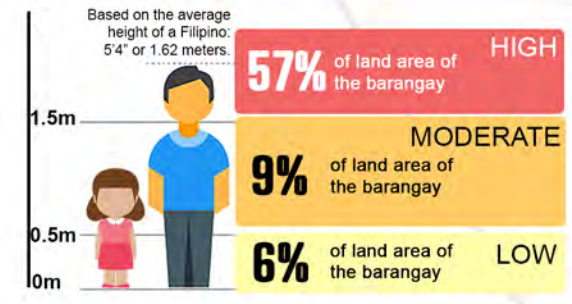
- Senior Citizen's Building
- Covered Court (near Dona Josefa Jara Martinez High School)
- Diosdado F. Macapagal Elementary School
- Lighthouse Baptist Church
- People's Park

**GUIDE** \* Rainfall Intensity Duration Frequency (RIDF) is based on Project NOAH

- alternative evacuation center. Used during low to moderate flooding events. RIDF: 243.1 mm of rainfall in 24 hrs.
- alternative evacuation center. Used during moderate flooding events. RIDF: 373.6 mm of rainfall in 24 hrs.
- primary evacuation center. Used during intense flooding events. RIDF: 481.2 mm of rainfall in 24 hrs.

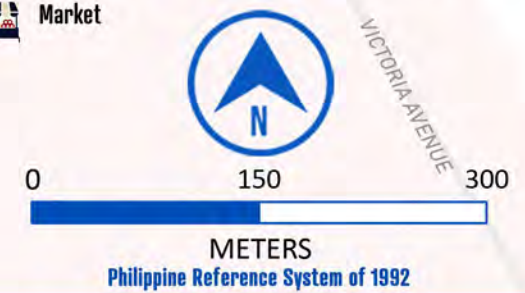
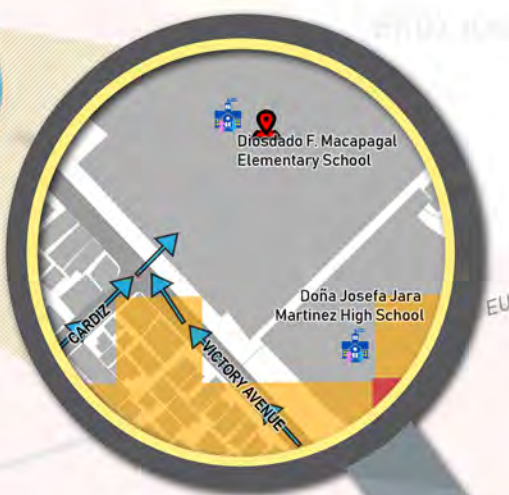
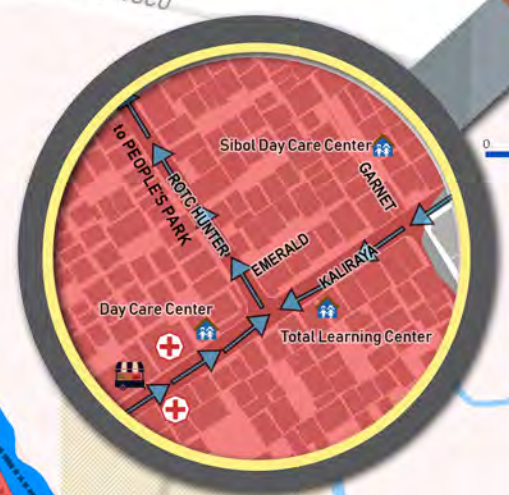
- GENERAL FLOOD EVACUATION ROUTES\***  
\*based on stakeholder inputs from the Focus Group Discussion August 1, 2018
- Evacuation route to Senior Citizen's Building
- Evacuation route to Covered Court (beside Dona Josefa Jara Martinez High School)

### FLOOD SUSCEPTIBILITY (LEBEL NG PAGBAHA)



### LEGEND

- CRITICAL FACILITIES**
- Barangay Hall
  - Basketball Court
  - Bridge
  - Day Care Center
  - Fire Station
  - Flood Marker
  - Health Center
  - Market
  - Place of Worship
  - Police Station
  - School
  - Barangay Boundary
  - Building (houses, establishments)
  - Waterways (San Juan River)
  - Road Network



# EARTHQUAKE IMPACT



## BARANGAY BAGONG SILANGAN, QUEZON CITY

Batay sa ginawang pag-aaral at pagsusuri ng PHIVOLCS ukol sa "earthquake risk" kasama ng NDRRMC - CSCAND - GA sa Greater Metro Manila Area - Risk Analysis Project (2013).

### LIQUEFACTION POTENTIAL

**10%** of land area of the barangay has moderate liquefaction potential



Kadalasang nangyayari ito sa mga lugar na malapit sa anyong tubig, kung saan ang pundasyon ng lupa ay humihina at lumalambot dulot ng malakas na pagyanig.

### EARTHQUAKE-INDUCED LANDSLIDE (EIL)

**22%** of land area of the barangay is exposed to **LOW SUSCEPTIBILITY**

**6%** of the barangay is exposed to **MODERATE SUSCEPTIBILITY**

**4%** of the barangay is exposed to **HIGH SUSCEPTIBILITY**



Pinahihina ng malakas na pagyanig ang mga libis ng bundok o mountain slopes na nagdudulot ng pagguho ng lupa at tipak ng mga bato.

### PROBABLE SECONDARY HAZARDS

Hazardous facilities, including LPG dealers/refilling stations, warehouses, factories, bridges and high-rise buildings, which may cause explosions, fire and debris fall.

Bridge

LPG - Refilling Station

### LEGEND

- Barangay Boundary
- Road Network
- Building (houses, establishments)
- West Valley Fault
- Barangay Hall
- Waterways

### EVACUATION SITES (see inset map)

1. General Villamor St.\*
  2. Malvar St.\*
  3. J.P. Rizal St.\*
  4. Gen. Capinpin St.\*
  5. Gen. Yenco St.\*
  6. Gen. MH Del Pilar St.\*
  7. DSWD Compound\*\*
- \*Designated Evacuation Sites for Bagong Silangan Elementary and High School  
\*\* From stakeholder input during the Focus Group Discussion activity



0 300 600  
METERS  
Philippine Reference System of 1992

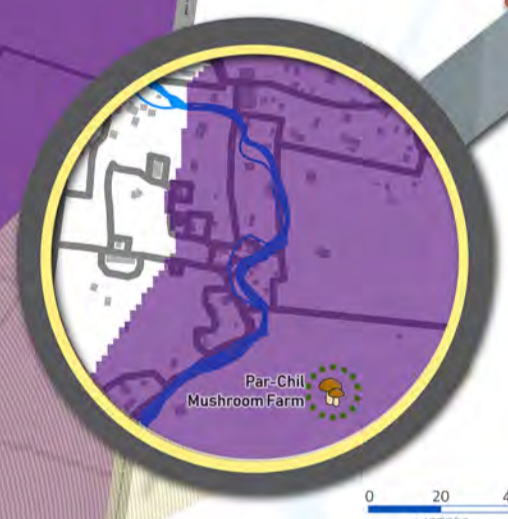
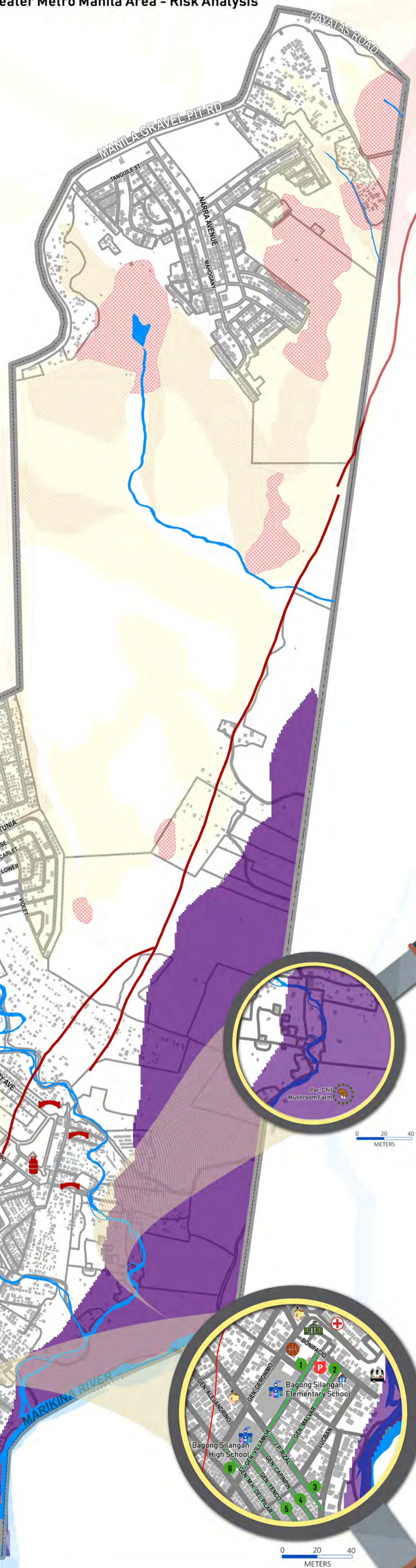


MOVING URBAN POOR COMMUNITIES TOWARDS RESILIENCE



7

BRGY. PAYATAS



# FLOOD IMPACT

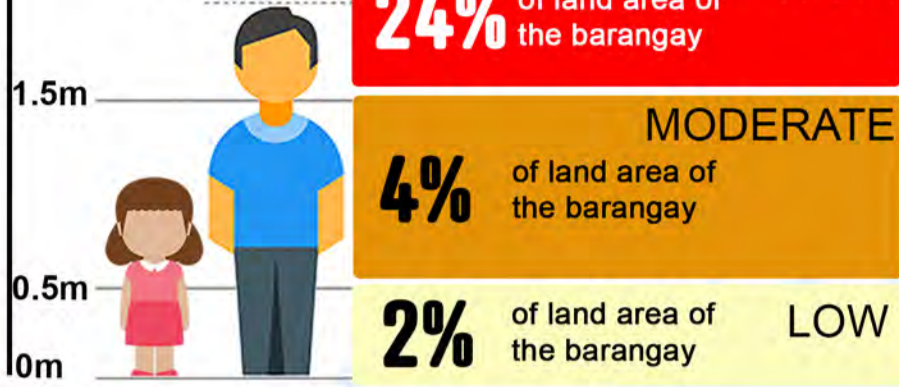


## BARANGAY BAGONG SILANGAN, QUEZON CITY

Batay sa 100-year flood hazard map (worst-case scenario) galing sa Project NOAH na napahusay at nabigyang patunay ng EMI sa pamamagitan ng participatory mapping process sa Barangay Bagong Silangan noong Hulyo 31, 2018.

### FLOOD SUSCEPTIBILITY (LEBEL NG PAGBAHA)

Based on the average height of a Filipino: 5'4" or 1.62 meters.



### EVACUATION CENTERS

- SB Park
- Bonifacio Day Care Center
- Sulyap Community Center
- Lumang Palengke
- General Geronimo Covered Court
- Bagong Silangan Elementary School
- Bagong Silangan Highschool
- Bagong Silangan Day Care Center
- San Isidro Labrador Parish
- Spring Valley Club House

**LEGEND** Rainfall Intensity Duration Frequency (RIDF) is based on Project NOAH

- alternative evacuation center. Used during low to moderate flooding events. RIDF: 243.1 mm of rainfall in 24 hrs.
- alternative evacuation center. Used during moderate flooding events. RIDF: 373.6 mm of rainfall in 24 hrs.
- primary evacuation center. Used during intense flooding events. RIDF: 491.2 mm of rainfall in 24 hrs.

- GENERAL FLOOD EVACUATION ROUTE** (going to Spring Valley Clubhouse, evacuation centers in Barangay Proper during intense and heavy rainfall)
- FLOOD EVACUATION ROUTE** (going to Bonifacio Day Care, SB Park, and Sulyap Community Center during low to moderate rainfall)

### LEGEND

#### CRITICAL FACILITIES

- Barangay Hall
- Basketball Court
- Bridge
- Day Care Center
- Fire Station
- Health Center
- Barangay Boundary
- Building Footprint
- Market
- Par-Chil Mushroom Farm (PCMF)
- Place of Worship
- Police Station
- School
- Urban Gardening Rose Virginie Youth Organization
- Retaining Wall
- Road Network
- Waterways

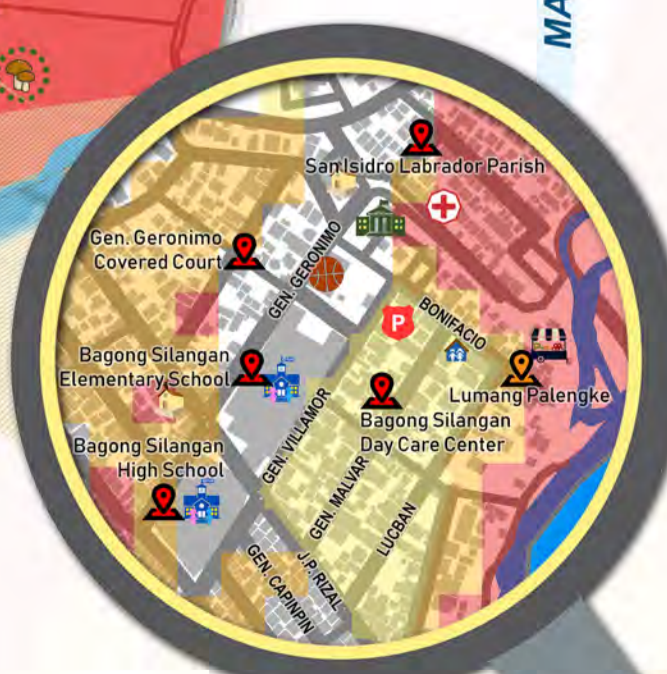
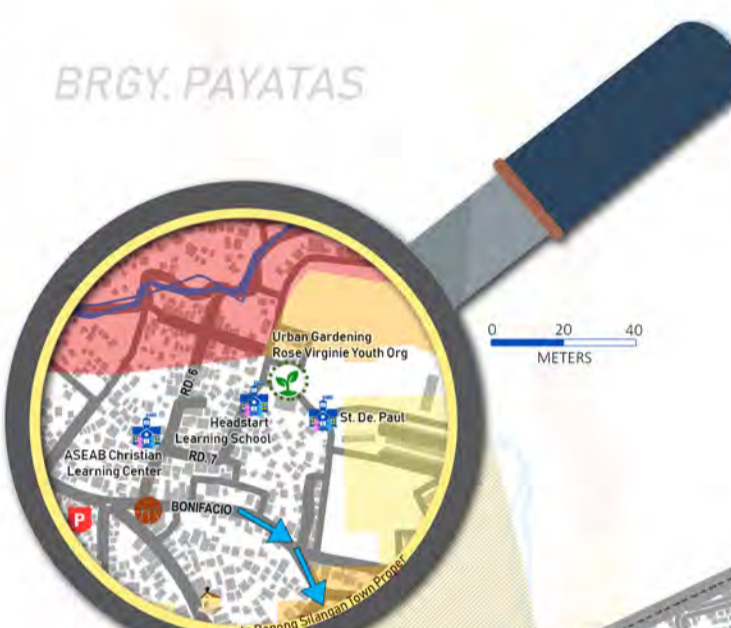
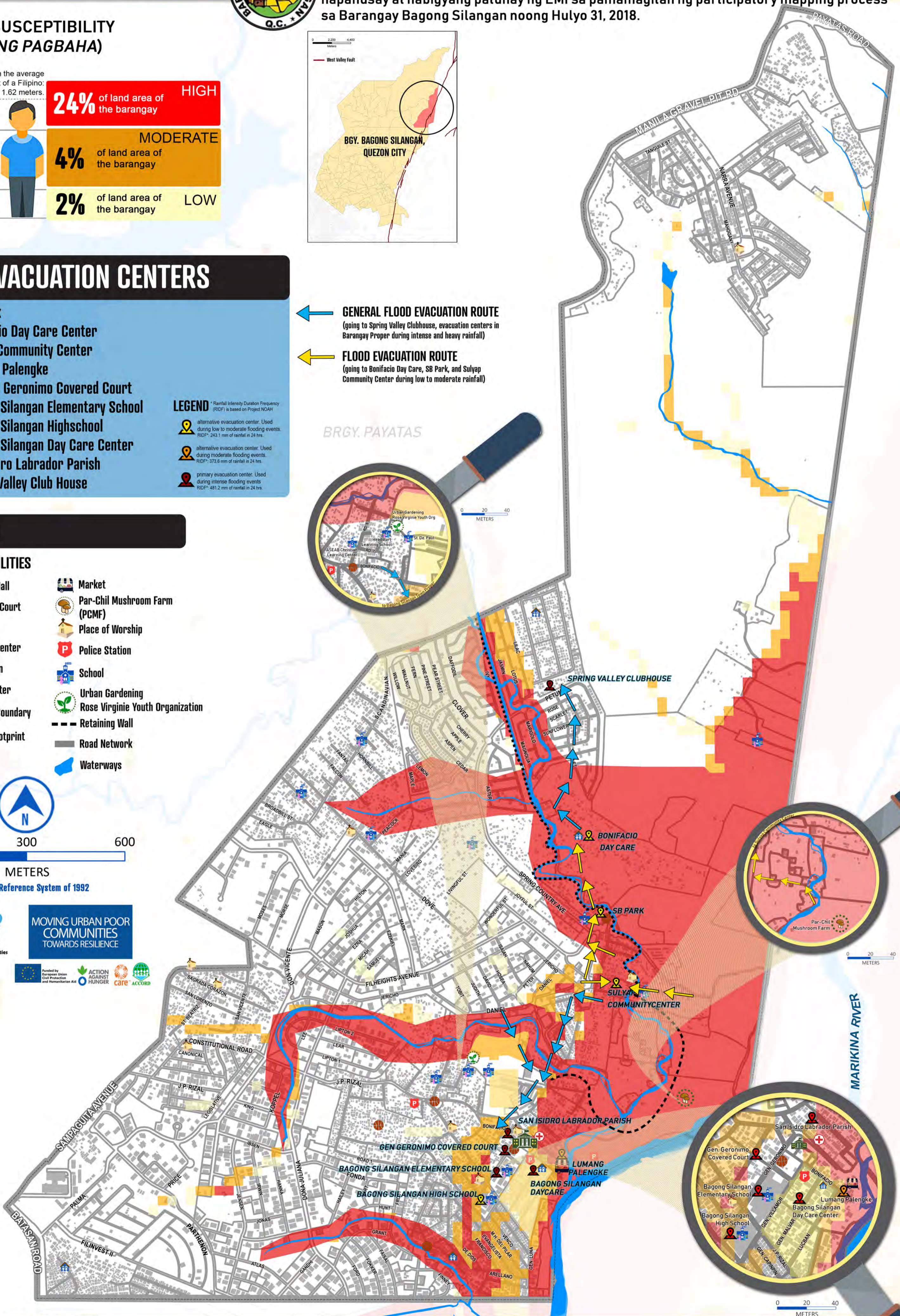


0 300 600 METERS

Philippine Reference System of 1992



MOVING URBAN POOR COMMUNITIES TOWARDS RESILIENCE

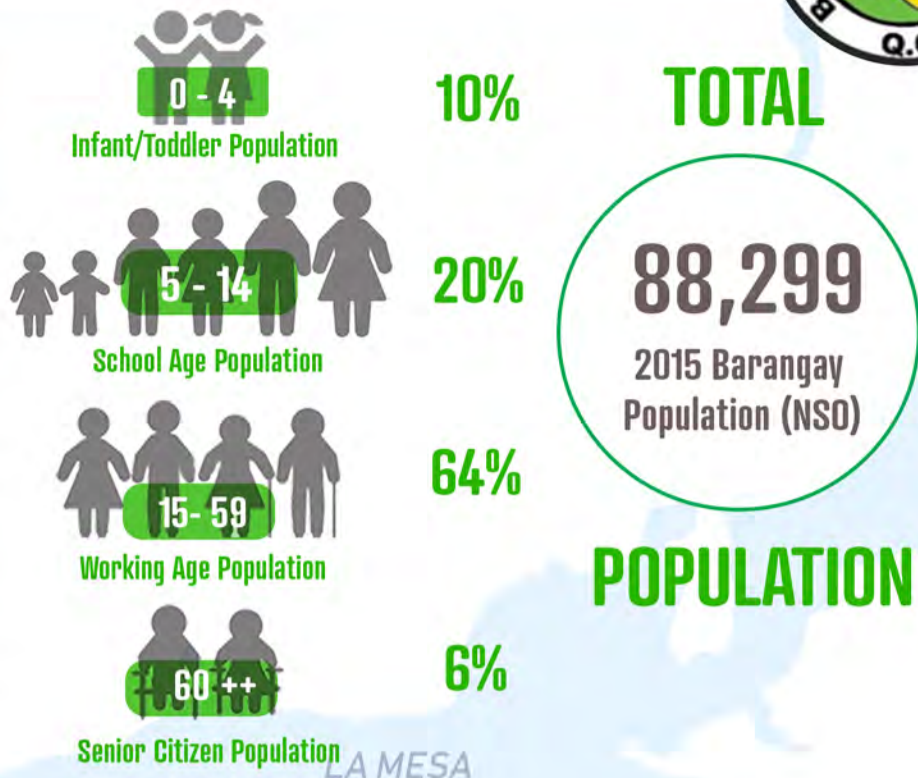


# BARANGAY PROFILE

## BARANGAY BAGONG SILANGAN, QUEZON CITY



### POPULATION



LA MESA DAM RESERVOIR

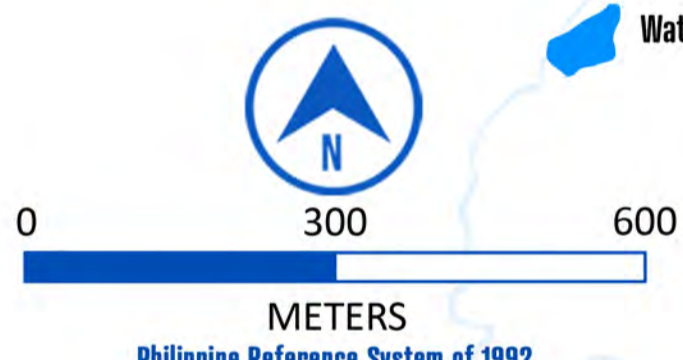
### LEGEND

#### CRITICAL FACILITIES

- Barangay Hall
- Basketball Court
- Bridge
- Day Care Center
- Fire Station
- Health Center
- Market
- Par-Chil Mushroom Farm (PCMF)
- Place of Worship
- Police Station
- School
- Urban Gardening Rose Virginie Youth Organization

#### SUB-BARANGAY DELINEATION

- Agricultural Land
- Barangay Proper
- Covenant - Aldea Village
- DSWD
- Filinvest 2
- Filinvest Heights - Brookside
- Rolling Hills
- Sitio Bakal
- Sitio Veterans
- Spring Valley
- Sugar Towne
- Violago Homes
- Barangay Boundary
- Building (houses, establishments)
- Road Network
- Waterways



**Sources of Data**

**Base data:**

- Administrative Boundaries came from Greater Metro Manila Area Risk Analysis Project (2013), field validated and enhanced by EMI through the Focus Group Discussion (2018)
- Sub barangay delineation were based from the output of the Focus Group Discussion (2018)
- Road Network and water ways data came from OpenStreetmaps, enhanced by EMI through the Focus Group Discussion (2018)

**Building Footprints and Points of Interests:**

- EMI, OpenStreetMaps, and the Quezon City Local Government
- Building heights derived from the DEMs from NAMRIA
- Focus Group Discussion held on August 1, 2018 at the SB Park (Area 5) in Brgy. Bagong Silangan, Q.C.

