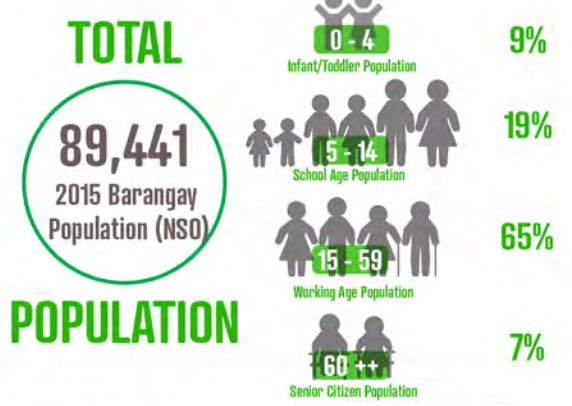


# BARANGAY PROFILE

## BARANGAY GEN. T. DE LEON, VALENZUELA CITY



0 20 40 METERS



### LEGEND

- CRITICAL FACILITIES**
- Barangay Hall
  - Basketball Court
  - Bridge
  - Day Care Center
  - Fire Station
  - Hospital
  - Health Center
  - Place of Worship
  - Police Station
  - School
  - Barangay Boundary
  - Building (houses, establishments)
  - Waterways
  - Road Network
  - Areas with perceived high child population\*
- \*based on stakeholder inputs from the Focus Group Discussion (September 7, 2018)



0 300 600 METERS

Philippine Reference System of 1992

**Sources of Data**

**Administrative Boundaries:**  
- Base data came from City Planning and Development Office and City Assessor's Office (2013), provided by the Valenzuela City DRRM Office (2018)  
- Sub barangay delineation were based from the output of the Focus Group Discussion (2018)  
- Road Network and water ways data came from OpenStreetmaps.  
- Road networks, provided by the Valenzuela City DRRM Office, enhanced by EMI through the Focus Group Discussion (2018)

**Building Footprints and Points of Interests:**  
- Valenzuela City DRRM Office  
- Open Street Maps (OSM), Google Earth  
- Focus Group Discussion held on September 6, 2018 at the Barangay Hall of Gen. T. De Leon



# EARTHQUAKE IMPACT

## BARANGAY GEN. T. DE LEON, VALENZUELA CITY



Batay sa ginawang pag-aaral at pagsusuri ng PHIVOLCS ukol sa "earthquake risk" kasama ng NDRRMC - CSCAND - GA sa Greater Metro Manila Area - Risk Analysis Project (2013).

**GROUND SHAKING**  
\*based on the PHIVOLCS Earthquake Intensity Scale (PEIS)

**DESTRUCTIVE**

**INTENSITY VII**

**VERY DESTRUCTIVE**

**INTENSITY VIII**

Ito ang tinatayang lakas ng pagyanig (*intensity*) sa buong Brgy. Bagong Silangan batay sa M7.2 earthquake scenario para sa West Valley Fault.

**PROBABLE SECONDARY HAZARDS**  
Hazardous facilities, including gas stations, warehouses, factories, high voltage transmission lines and high-rise buildings, which may cause explosions, fire and debris fall.

- Bridge
- Gas Station
- Hazardous Facilities (warehouse, factories)
- High Rise Buildings
- High Voltage Transmission Lines
- LPG Dealer/Refilling Station
- Areas made up of light materials (fire-prone)

**EVACUATION CENTERS**

- 1 Gen. T. De Leon Barangay Hall
- 2 Gen. T. De Leon Elementary School Multipurpose Coop.
- 3 Gen. T. De Leon 3S Center
- 4 San Roque Supermarket Driveway
- 5 San Gregorio
- 6 Sitio Kabatuhan
- 7 J.E. Famada

**EARTHQUAKE EVACUATION ROUTES\***  
\*based on stakeholder inputs from the Focus Group Discussion

- Evacuation route to Gen. T. De Leon Barangay Hall
- Evacuation route to Gen. T. De Leon Elementary School Multipurpose Cooperative, 3S Center, and San Roque Supermarket
- Evacuation route to San Gregorio
- Evacuation route to Sitio Kabatuhan
- Evacuation route to J.E. Famada

**LEGEND**

- Barangay Boundary
- Building (houses, establishments)
- Waterways
- Open Space (Potential Evacuation Center)
- Road Network
- Barangay Hall
- Areas with perceived high child population\*  
\*based on stakeholder inputs from the Focus Group Discussion



0 300 600 METERS

Philippine Reference System of 1992

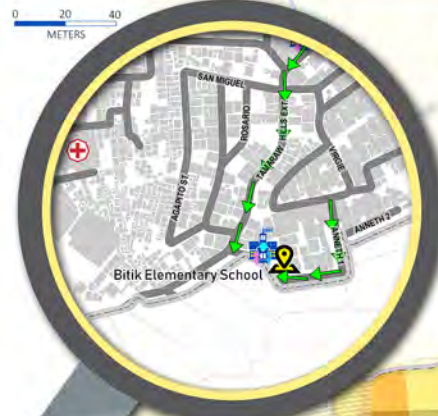


# FLOOD IMPACT

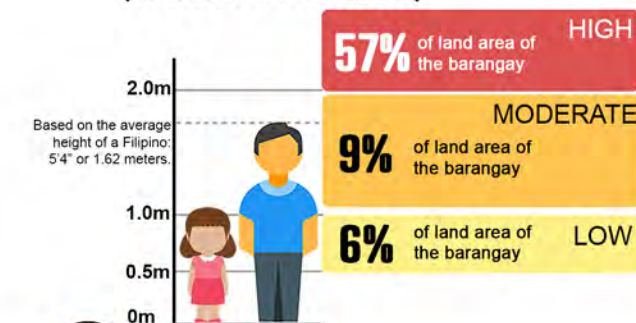
## BARANGAY GEN. T. DE LEON, VALENZUELA CITY



Batay sa flood hazard map (worst-case scenario) galing sa Mines and Geosciences Bureau (MGB) na napahusay at nabigyang patunay ng EMI sa pamamagitan ng participatory mapping process sa Barangay Gen. T.



### FLOOD SUSCEPTIBILITY (LEBEL NG PAGBAHA)



### EVACUATION CENTERS

- 1 Gen. T. De Leon National High School
- 2 Gen. T. De Leon Elementary School
- 3 Santiago A. De Guzman Elementary School
- 4 Bitik Elementary School

- ← Evacuation Route to Gen. T. De Leon National High School
- ← Evacuation Route to Gen. T. De Leon Elementary School
- ← Evacuation Route to Santiago A. De Guzman Elementary School

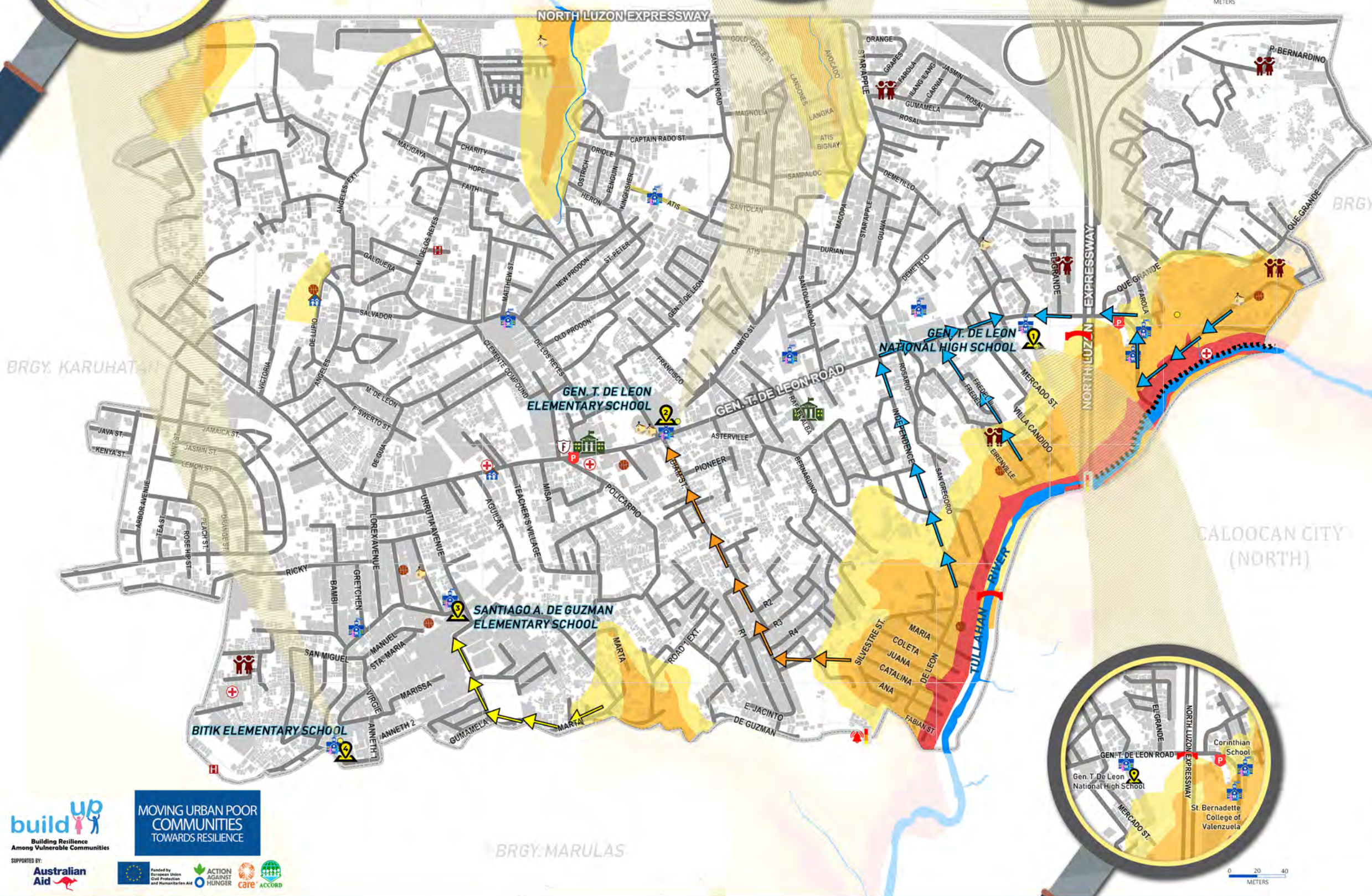
\*based on stakeholder inputs from the Focus Group Discussion last September 7, 2018

### LEGEND

#### CRITICAL FACILITIES

- |                  |                                   |
|------------------|-----------------------------------|
| Barangay Hall    | Market                            |
| Basketball Court | Place of Worship                  |
| Bridge           | Police Station                    |
| Day Care Center  | School                            |
| Fire Station     | Barangay Boundary                 |
| Flood Alarm      | Building (houses, establishments) |
| Flood Marker     | Waterways (San Juan River)        |
| Health Center    | Retaining Wall                    |
| Hospital         | Road Network                      |

Areas with perceived high child population\*  
\*based on stakeholder inputs from the Focus Group Discussion (September 7, 2018)

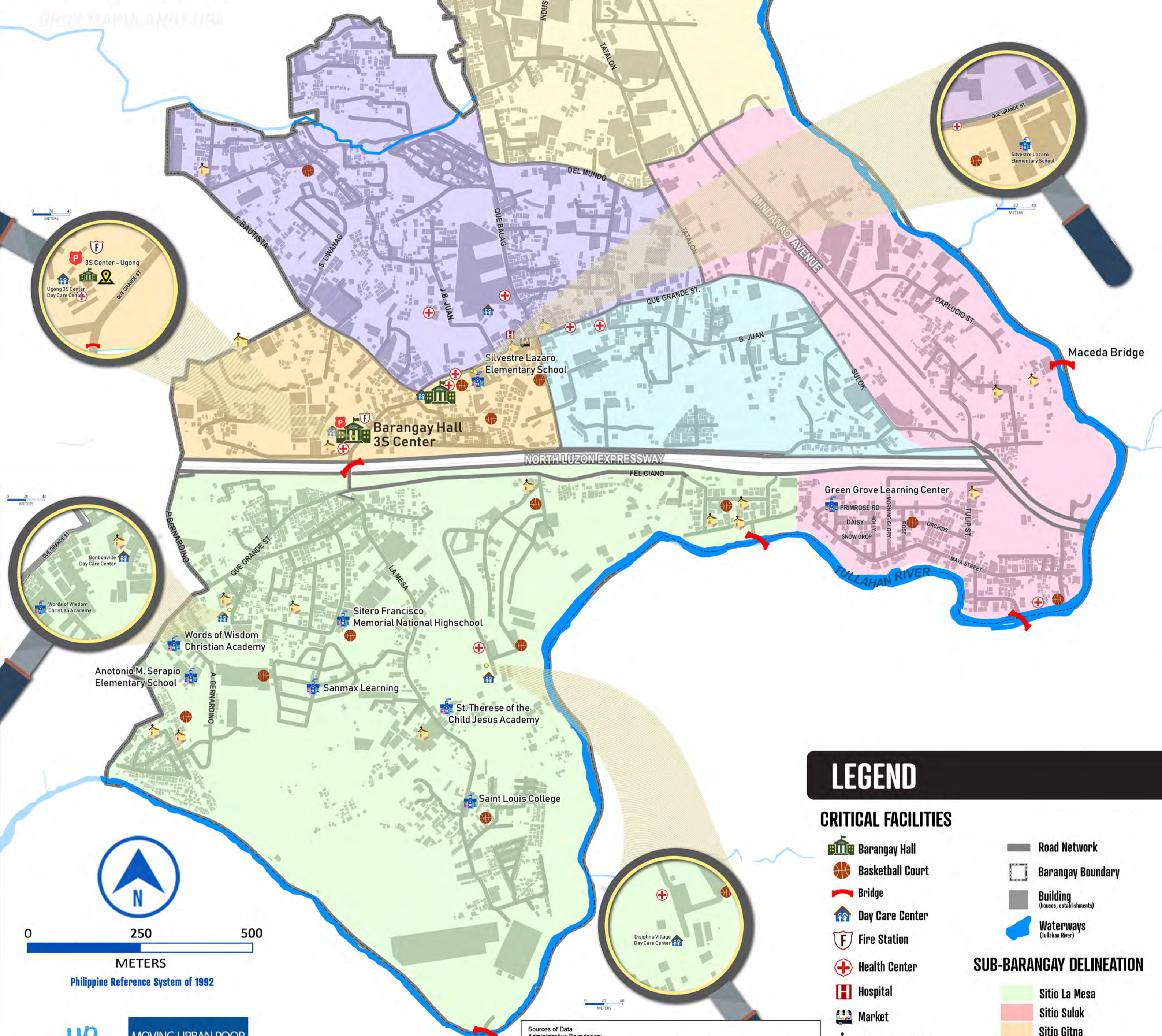
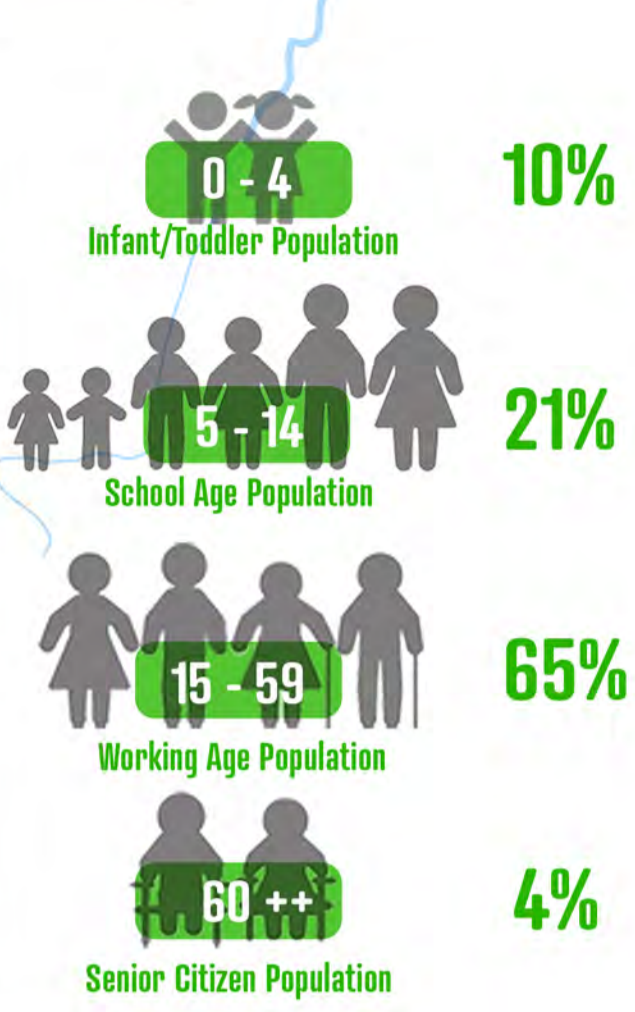


# BARANGAY PROFILE

BARANGAY UGONG, VALENZUELA CITY



## POPULATION



## LEGEND

### CRITICAL FACILITIES

- Barangay Hall
- Basketball Court
- Bridge
- Day Care Center
- Fire Station
- Health Center
- Hospital
- Market
- Place of Worship
- Police Station
- School

- Road Network
- Barangay Boundary
- Building (houses, establishments)
- Waterways (Tullahan River)

### SUB-BARANGAY DELINEATION

- Sitio La Mesa
- Sitio Sulok
- Sitio Gitna
- Sitio Tatalon
- Sitio F. Bautista
- Sitio Que Balag

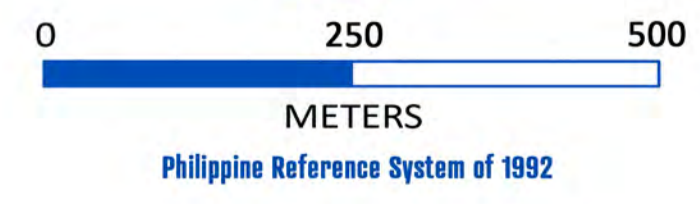
**Sources of Data**

**Administrative Boundaries:**

- Base data came from City Planning and Development Office and City Assessor's Office (2013), provided by the Valenzuela City DRRM Office (2018)
- Sub barangay delineation were based from the output of the Focus Group Discussion (2018)
- Road Network and water ways data came from OpenStreetmaps.
- Road networks, provided by the Valenzuela City DRRM Office, enhanced by EMI through the Focus Group Discussion (2018)

**Building Footprints and Points of Interests:**

- Valenzuela City DRRM Office
- Open Street Maps (OSM), Google Earth
- Focus Group Discussion held on September 6, 2018 at the 3C Center of Brgy. Ugong





Batay sa ginawang pag-aaral at pagsusuri ng PHIVOLCS ukol sa "earthquake risk" kasama ng NDRRMC - CSCAND - GA sa Greater Metro Manila Area - Risk Analysis Project (2013).

### GROUND SHAKING

**VERY DESTRUCTIVE**

**INTENSITY VIII**

Road and building damage

Landslides and debris fall

Violent Shaking  
Difficulty to stand up  
Tilted utility posts, towers

\*based on the PHIVOLCS Earthquake Intensity Scale (PEIS)

Ito ang tinatayang lakas ng pagyanig (*intensity*) sa buong Brgy. Bagong Silangan batay sa M7.2 earthquake scenario para sa West Valley Fault.

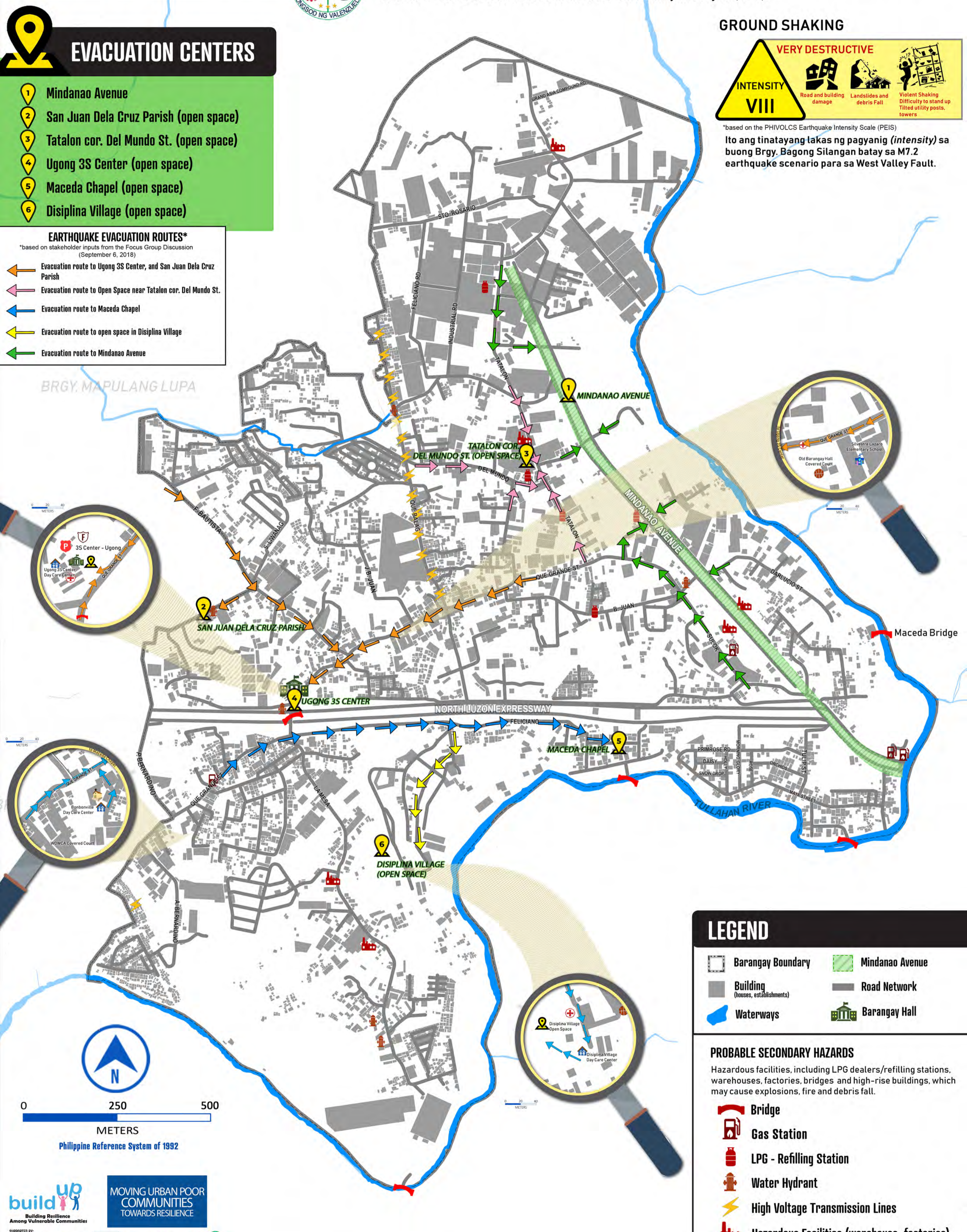
### EVACUATION CENTERS

- 1 Mindanao Avenue
- 2 San Juan Dela Cruz Parish (open space)
- 3 Tatalon cor. Del Mundo St. (open space)
- 4 Ugong 3S Center (open space)
- 5 Maceda Chapel (open space)
- 6 Disiplina Village (open space)

#### EARTHQUAKE EVACUATION ROUTES\*

\*based on stakeholder inputs from the Focus Group Discussion (September 6, 2018)

- Evacuation route to Ugong 3S Center, and San Juan Dela Cruz Parish
- Evacuation route to Open Space near Tatalon cor. Del Mundo St.
- Evacuation route to Maceda Chapel
- Evacuation route to open space in Disiplina Village
- Evacuation route to Mindanao Avenue



### LEGEND

- Barangay Boundary
- Mindanao Avenue
- Building (houses, establishments)
- Road Network
- Waterways
- Barangay Hall

### PROBABLE SECONDARY HAZARDS

Hazardous facilities, including LPG dealers/refilling stations, warehouses, factories, bridges and high-rise buildings, which may cause explosions, fire and debris fall.

- Bridge
- Gas Station
- LPG - Refilling Station
- Water Hydrant
- High Voltage Transmission Lines
- Hazardous Facilities (warehouse, factories)



0 250 500  
METERS

Philippine Reference System of 1992

Building Resilience  
Among Vulnerable Communities

MOVING URBAN POOR  
COMMUNITIES  
TOWARDS RESILIENCE

SUPPORTED BY:

# FLOOD IMPACT

## BARANGAY UGONG, VALENZUELA CITY

Batay sa flood hazard map (worst-case scenario) galing sa Mines and Geosciences Bureau (MGB) na napahusay at nabigyang patunay ng EMI sa pamamagitan ng participatory mapping process sa Barangay Ugong noong Setyembre 6, 2018.

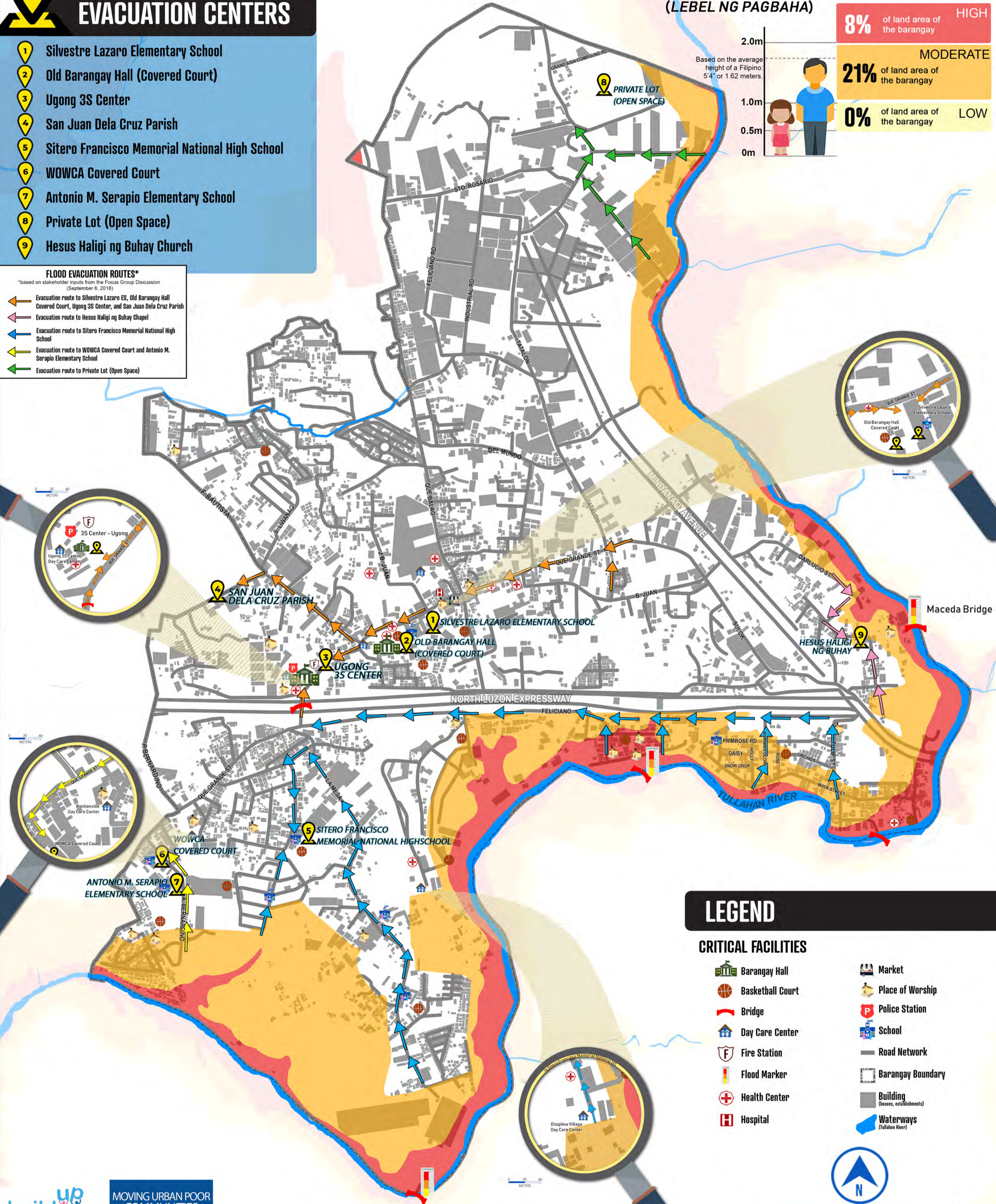
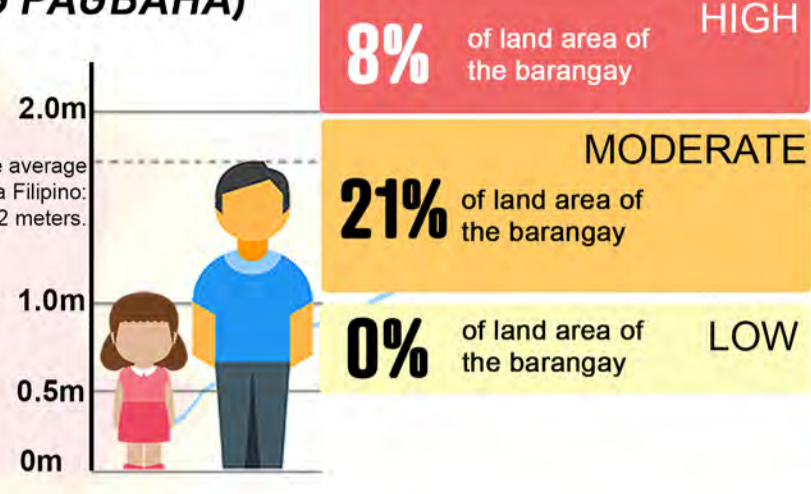
### EVACUATION CENTERS

- 1 Silvestre Lazaro Elementary School
- 2 Old Barangay Hall (Covered Court)
- 3 Ugong 3S Center
- 4 San Juan Dela Cruz Parish
- 5 Sitero Francisco Memorial National High School
- 6 WOWCA Covered Court
- 7 Antonio M. Serapio Elementary School
- 8 Private Lot (Open Space)
- 9 Hesus Haligi ng Buhay Church

**FLOOD EVACUATION ROUTES\***  
\*based on stakeholder inputs from the Focus Group Discussion (September 6, 2018)

- Evacuation route to Silvestre Lazaro ES, Old Barangay Hall Covered Court, Ugong 3S Center, and San Juan Dela Cruz Parish
- Evacuation route to Hesus Haligi ng Buhay Chapel
- Evacuation route to Sitero Francisco Memorial National High School
- Evacuation route to WOWCA Covered Court and Antonio M. Serapio Elementary School
- Evacuation route to Private Lot (Open Space)

### FLOOD SUSCEPTIBILITY (LEBEL NG PAGBAHA)



### LEGEND

- CRITICAL FACILITIES**
- Barangay Hall
  - Basketball Court
  - Bridge
  - Day Care Center
  - Fire Station
  - Flood Marker
  - Health Center
  - Hospital
  - Market
  - Place of Worship
  - Police Station
  - School
  - Road Network
  - Barangay Boundary
  - Building (houses, establishments)
  - Waterways (Tullahan River)



Philippine Reference System of 1992

**build up**  
 Building Resilience Among Vulnerable Communities

**MOVING URBAN POOR COMMUNITIES TOWARDS RESILIENCE**

SUPPORTED BY: Australian Aid, European Union, ACTION AGAINST HUNGER, care ACCORD